

MONTHLY MEMBERSHIP PROGRESS REPORT

District 39 E

Results as of: 6/30/2020

GMT:

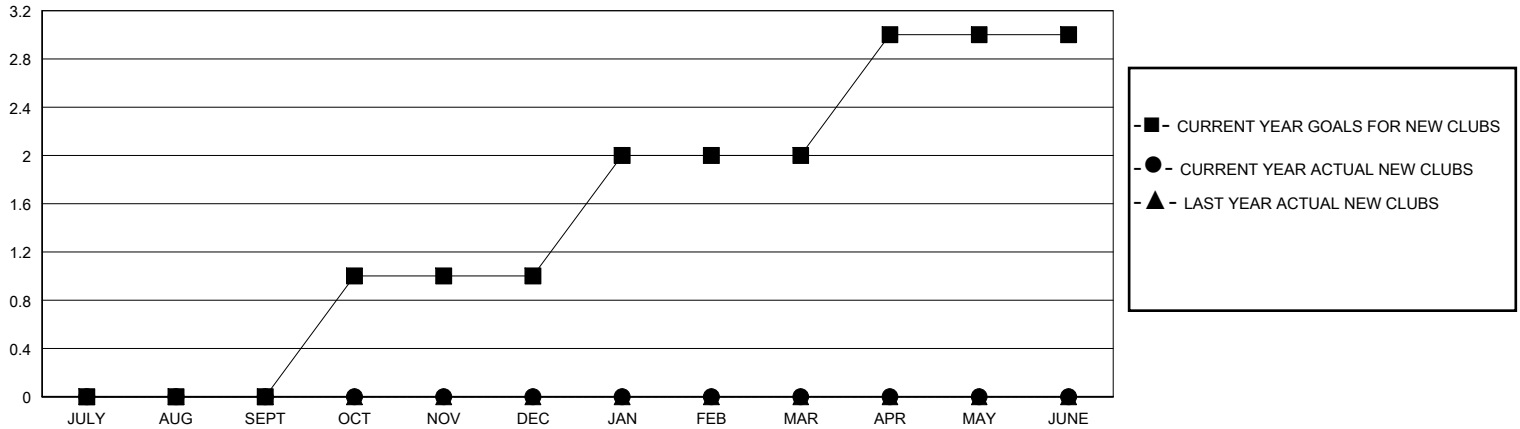
LOCATION IDAHO

GMT CA

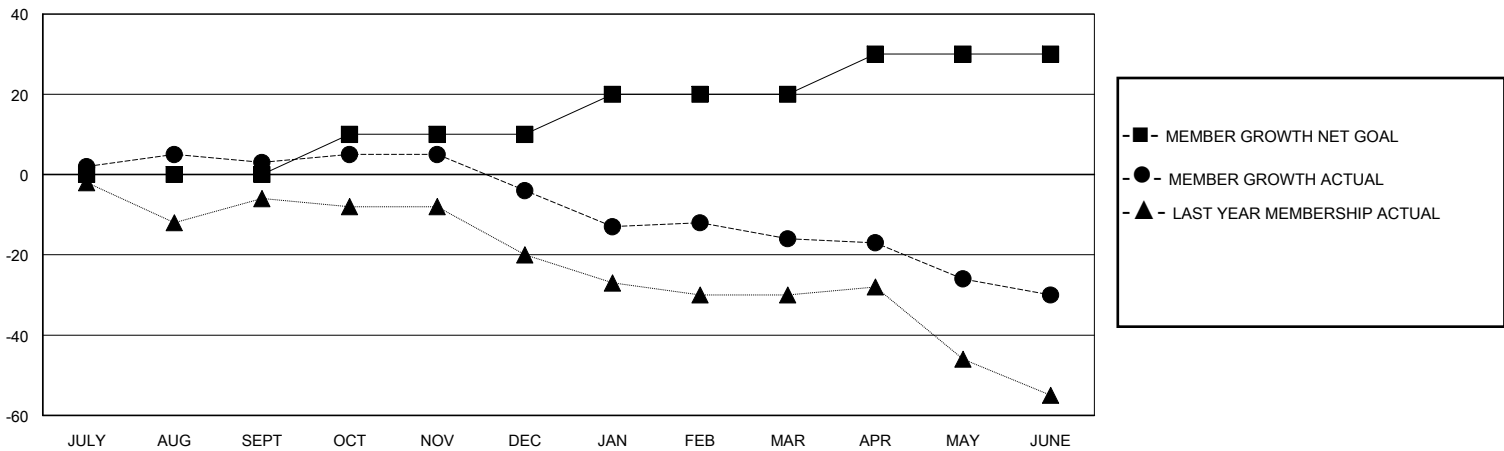
Clubs			
RESULTS FOR 2019-2020			
QUARTER	NEW CLUB GOAL	NEW CLUBS	DROPPED CLUBS
JULY/AUG/SEPT	0	0	0
OCT/NOV/DEC	1	0	1
JAN/FEB/MAR	1	0	0
APR/MAY/JUNE	1	0	1

Members			
RESULTS FOR 2019-2020			
QUARTER	MEMBER GROWTH NET GOAL	MEMBER GROWTH ACTUAL	DROPPED MEMBERS ACTUAL (including transfers)
JULY/AUG/SEPT	0	6	3
OCT/NOV/DEC	10	3	10
JAN/FEB/MAR	10	3	15
APR/MAY/JUNE	10	3	16

GOALS AND ACTUAL NEW CLUBS CUMULATIVE



GOALS AND ACTUAL MEMBERS CUMULATIVE



DROPPED CLUBS: 2

7 CLUBS OF 24 ADDED 1 OR MORE NEW MEMBERS

GENDER DISTRIBUTION

MALE 245 (61.56%)
FEMALE 153 (38.44%)

DROPPED MEMBERS

DECEASED	4
CLUB CANCELLED	2
OTHER	38
TOTAL	44

[CLICK HERE FOR CUMULATIVE MEMBERSHIP DATA](#)

TOTAL FAMILY UNIT MEMBERS	129
FAMILY MEMBERS PAYING HALF DUES	68